

What's New?

Version 11

RIP SOFTWARE - VERSION 11 - CALDERA 2016



Table of Content

Table of Content	2
Product Naming	3
New Features & Enhancements	4
New Features	4
New OS Supported	4
New Look&Feel	5
High performance with APPE4	5
Democratize performance with OpenCL	6
Canvas Market and Better Cut Workflows with PrintBleed	7
Manage your RIP fleet through Sync&Deploy	9
Trim-o-matik with crop marks and annotations	10
EasyMedia Print&Import	11
Spot Ink Customization	11
Advanced Color Corrections	12
Enhancements	13
Documentation	14
Manuals	14
HowTo	14
New drivers	15
Printers	15
Spectrophotometers	18
New Spectrophotometers	18
Dropped Spectrophotometers	18
New Cutters	18

License Agreement

Copyright 2016 Caldera. All rights reserved.

All trademarks, logos and brand names mentioned in this publication are property of their respective owners.

All images and photographs here featured are the copyright of their respective owners.

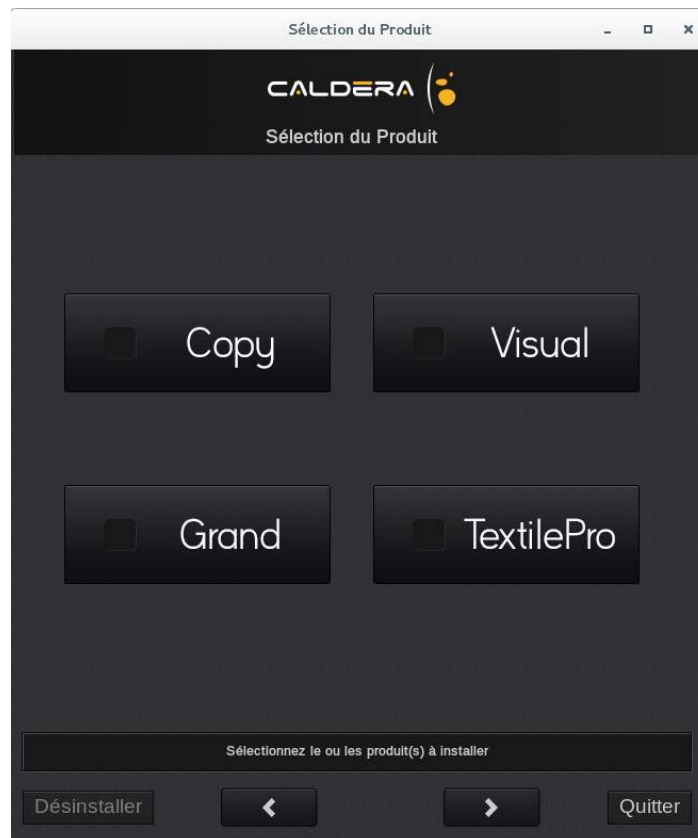
Caldera reserves the right to modify software specifications and content cited in this document without prior notice.



Product Naming

We simplified the product naming at installation into 4 ranges :

- Copy
- Visual
- Grand
- TextilePro



New Features & Enhancements

New Features

New OS Supported

Caldera RIP V11 is now supported on latest OS version of Apple **MacOS 10.12 Sierra** and official **Debian Jessie 8.6**.

Be careful if you install the Debian 8.6 "Jessie", please choose the MATE UI.

Complete list of supported OS for version 11 :

- Mac 10.9 Mavericks
- Mac 10.10 Yosemite
- Mac 10.11 El Capitan
- Mac 10.12 Sierra
- Caldera Debian 2.3
- Debian Jessie 8.6

Warning: Caldera Debian 2.3 will not have APPE 4 feature installed, and will stay with APPE 3 version.

Note: Caldera V11 USB Key includes now Debian Jessie 8.6 installer.

Debian Extra Packages

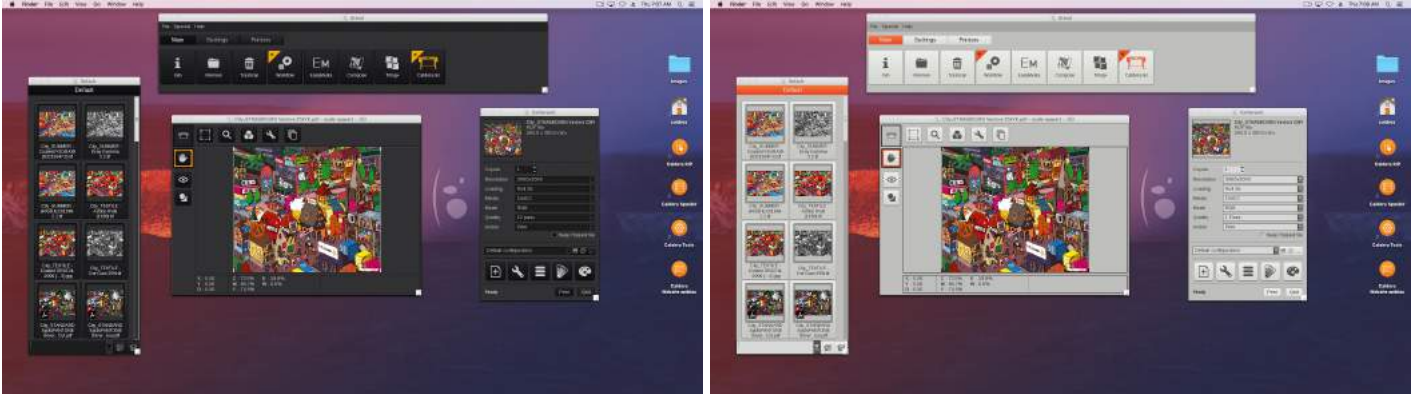


Extra packages will not be installed by **Caldera RIP**. Click on this button on the desktop to open this webpage <https://www.caldera.com/support/tools/> where you can find the following extra packages:

- Acrobat reader
- Google Chrome (Script works with or without updates installed)
- TeamViewer (Script works with or without Caldera installed)
- Nvidia driver
- Conky
- Caldera ScreenSaver

New Look&Feel

Caldera RIP is now distributed with a new **Desktop Look&Feel** including 2 skins, new icons, wallpapers, and screensavers.



At first run of **Caldera RIP** software, you will be able to choose the common parameters of the software for your use :

- **Skin:** Black or Grey
- **Unit:** meters or imperial
- **Profile:** a choice of your production input profile in the following list :
 - Caldera Legacy (as V10 and previous versions)
 - GRACoL (US IDEAlliance standards)
 - ISOCoated V2 (Europe ISO standards)
 - JapanColor (Japanese standard)

High performance with APPE4

Using **Adobe PDF Print Engine** (APPE) is the guaranty to have the better coherency between **Adobe Creative Cloud** software that generates PDF and **Caldera RIP** that decodes them.

That means there is no more PDF that can not be opened by the RIP, less transparency, overprints issues when printing.

APPE 4 has been implemented in **V11** with 3 major enhancements compared to **APPE 3**:

- Higher performance for PDF ripping, due to augmentation of cache sizes and better management of large caches
- Smoother shades and better control on gradients
- Number of spot colors in files from 21 to 127

Warning: Caldera Debian 2.3 will not have APPE 4 feature installed, and will stay with APPE 3 version.

NEW FEATURES & ENHANCEMENTS

Democratize performance with OpenCL

OpenCL (Open Computing Language) is a language including API that allows to boost computation by using in parallel multi-core CPUs and GPUs from NVIDIA, AMD, Intel, and much more (<https://www.khronos.org/opencl/>).

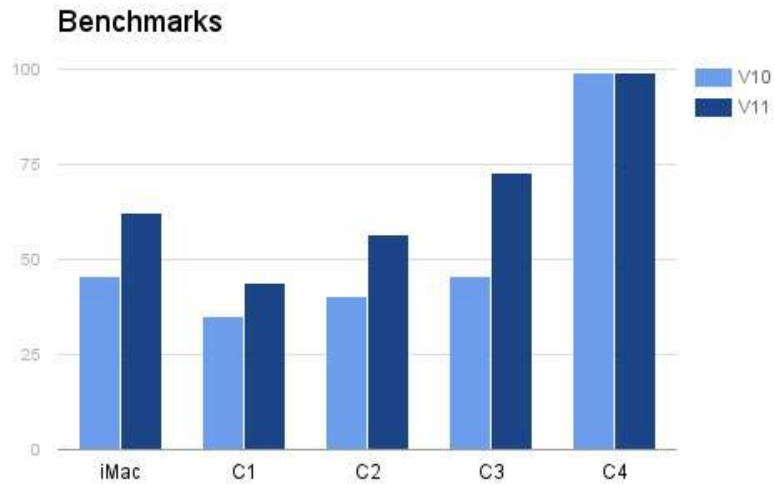
That means that every station with multi-cores and recent GPUs will benefit in term of RIP performance from this implementation including:

- iMac (+40%)
- C1 - C3 (between +25% and +50%)

Warning: Only halftone mode benefits from OpenCL.

Note: this feature will be included in the VisualRIP+, GrandRIP+ and TextilePro products only.

That also means that V11 workstations will be able to drive more printers than in V10, and so you will need to invest less in hardware.



Canvas Market and Better Cut Workflows with PrintBleed

PrintBleed is a new feature available in the print interface that allows to clone pixels around images.



This expansion of image borders targets

- Canvas Market in Crop Marks tab.
- Cut jobs like stickers in Step&Repeat tab with *CutContour* activated.

Bleeding Methods

Three methods of cloning are available:

- Mirror
- Duplicate
- Mask (only for Cut jobs if the image has been prepared with bleed and *CutContour*)

NEW FEATURES & ENHANCEMENTS

Example with a non-rectangular object (for cutting)



Mask method

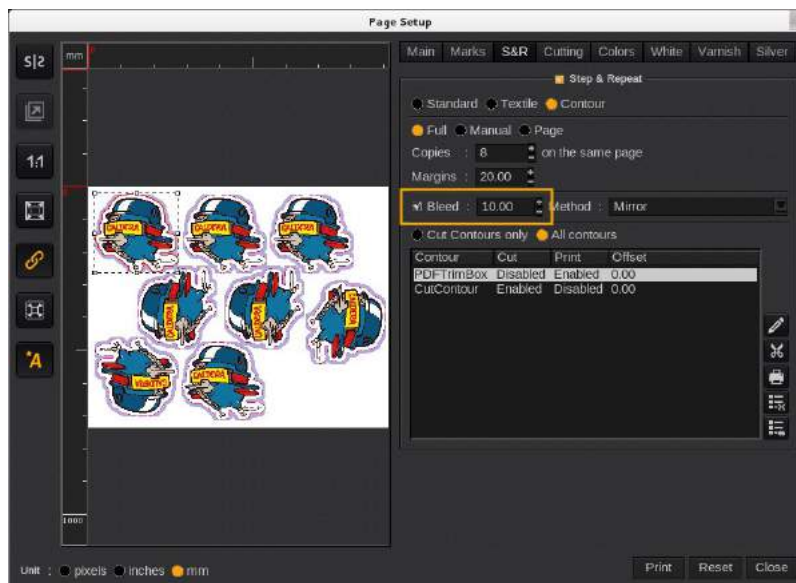


Duplicate method



Mirror method

Warning: For performance reasons, there is no previews of the cloned pixels, only a violet contour in the Cut, but no contour at all for the Canvas.



Manage your RIP fleet through Sync&Deploy

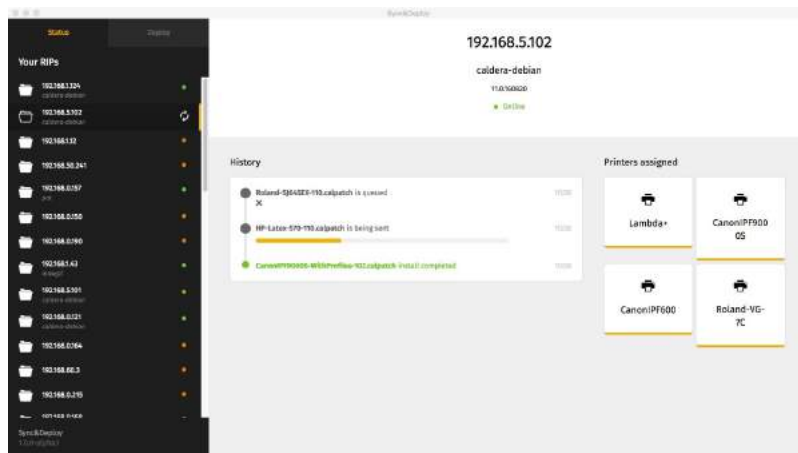
Sync&Deploy feature allows to manage several **Caldera RIP** software applications in the local network by:

- Identify RIPs with a name
- Group RIPs together to simplify management of RIPs
- Deploy updates and drivers on those groups and RIPs

Web Application

An application (for Windows, Mac and Linux) is available to download through the web interface of localhost. It allows to :

- Deploy updates and fixes (calpatch)
- Deploy drivers (calpatch)

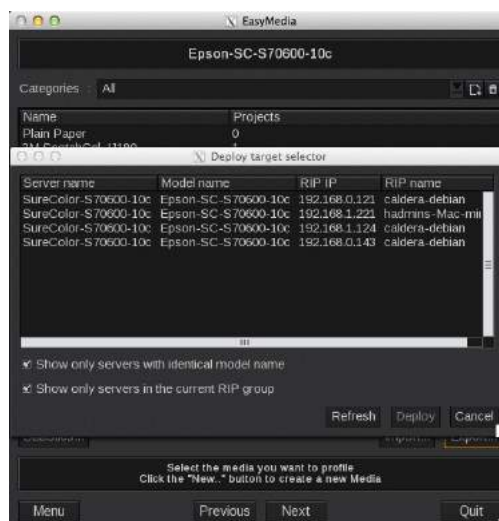


EasyMedia

In **EasyMedia***, import and export of media-patch have been rationalized :

- Import of file and from ProfileLibrary is possible
- Export to file and deploy to other RIPs on the network

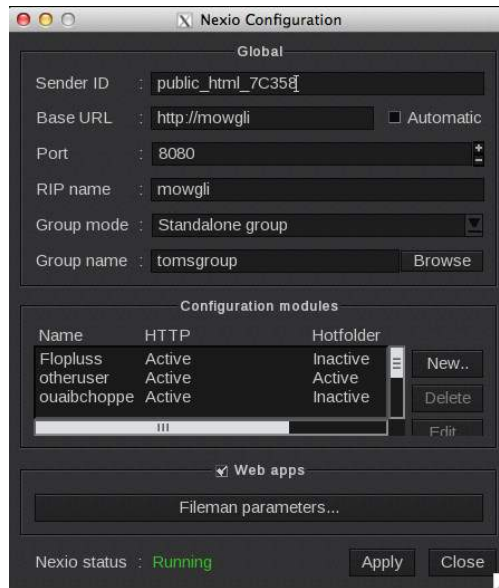
*EasyMedia is named ProfileExpert in the TextilePro interface.



NEW FEATURES & ENHANCEMENTS

Notes

- Default name of a RIP is the hostname. Can be customized in **CalderaNexio** configuration.



- If Web Apps option is not enabled, the RIP will not be seen by **Sync&Deploy**.
- Customers with different dongles for the same version is not a limitation.

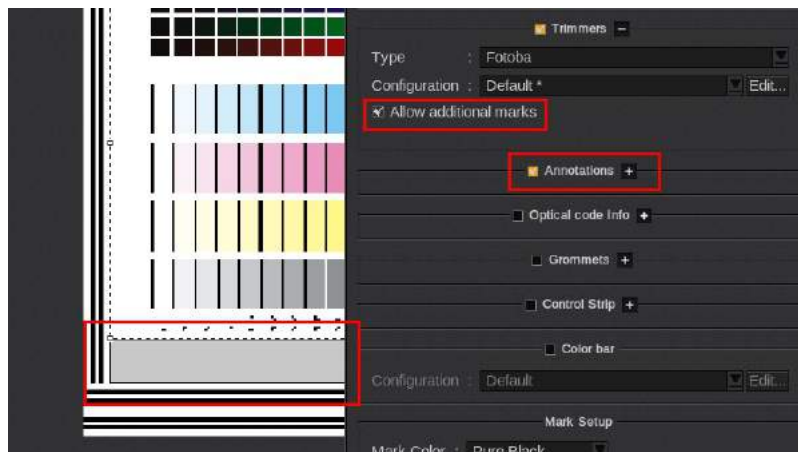
Warning: Targeted RIP will be restarted without a notification on the remote host. If drivers are running, they will be stopped and prints will be lost.

Trim-o-matik with crop marks and annotations

Now, you can combine Trimmers and Marks to take advantage in the finishing of :

- Crop marks
- Annotations
- QR codes
- Control Strip

This allows to keep job information after trimming until the final steps of the finishing. The feature is disabled by default and can be enabled in Trimmer configuration.



EasyMedia Print&Import

*EasyMedia is named ProfileExpert in the TextilePro interface.

As there is a lot of request to support new Spectrophotometers and because their SDK are not available for Mac and Linux platforms, we decided to include some Spectrophotometers with **Print&Import** feature.

It allows to print from EasyMedia* targets prepared for those devices and to import their specific measurements formats.

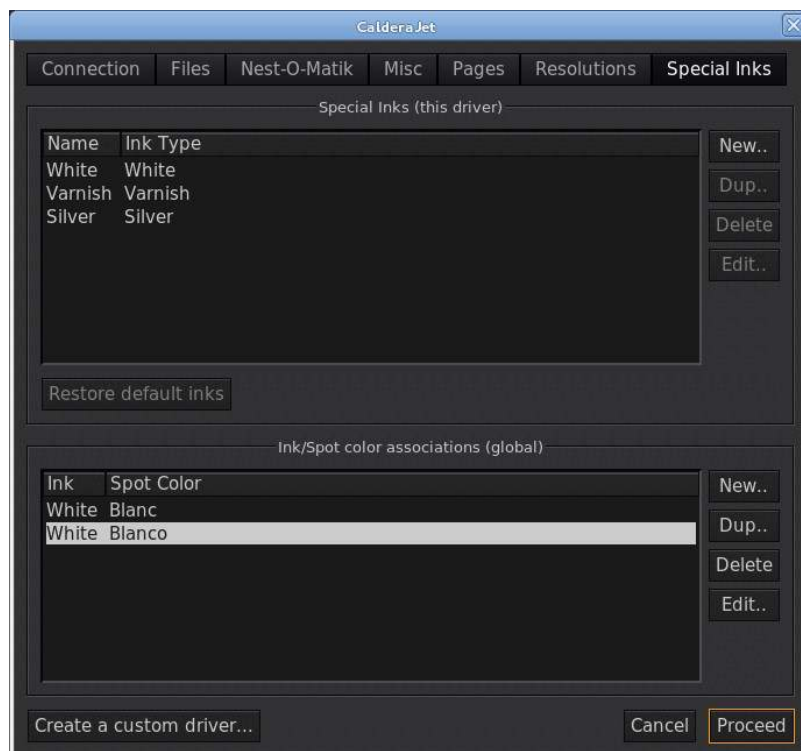
Print&Import V11 supported Spectrophotometers:

- Konica Minolta FD9
- X-Rite VeriColor: High aperture for carpet and industrial
- X-Rite Ci60, Ci62, Ci64: Sphere Spectrophotometers for very structured surface

Spot Ink Customization

In **Server Administration**, you can now define your Spot Inks to be used in additional tabs in the Print Interface. Customization of the name of the Spot Color to be mapped is also available at this location.

This is very useful when you have multiple printers with same type of ink but with different naming. You can now only prepare one file with the Spot Color of your choice for both printers.



NEW FEATURES & ENHANCEMENTS

Advanced Color Corrections

Color Correction tabs now include all primaries in **NColor** and allow to last moment fix in **RGB**.



Note: Both RGB and primaries corrections are possible at the same time.

Enhancements

- Print Interface:
 - Custom annotations now can have dynamic tags (like QRcode)
 - Added two new dynamic tags: current tile number and total number of tiles.
 - Cut contour buttons have been modified to be more space-efficient
- Trimmers: Fotoba “End-of-order” double Marks
- Server Administrations: Pages and Resolutions have now their own tab.
- PrintStandardVerifier: Updated standards
 - Fogra PSD 2016
 - GRACoL 2013
 - ISO Coated 2013 (Fogra 51)
 - ISO Uncoated 2013 (Fogra 52)
- New test images
 - Quality Control Checker : allow to check easily spot colors and embedded profiles
 - New Caldera stickers
 - New advertisement like images
 - New Caldera City with various preparations as examples
- EasyMedia:
 - New Post-Separations
 - v4.5 Smooth : higher gamut + better smoothness than 2.1/4.1
 - v4.5 Max Gamut : maximize gamut, may produce breaks in difficult transitions.
 - Not available for all NColor modes
 - New Illuminant Condition profile generation to match ColorViewer 3200K light simulation
 - Gradient test charts with circular gradients and % indicators (available also until 4 NColors)
- Hotfolders: removed buttons “Add queue”, “Remove queue”, “List queues”
- Calderatools (on desktop)
 - ‘Save’ and ‘lpr’ scripts are deprecated and should not be used anymore.
 - Removed ‘vnc’ & ‘psdrivers’ folders

Documentation

Manuals

Updated in ISO :

- Caldera RIP
- Installation
- Step&Repeat
- Trim-O-Matik

Added in ISO :

- GrandCut
- PrintStandardVerifier
- Spooler

HowTo

Updated in ISO :

- Add Page Sizes and Print Resolutions
- Be G7 with Caldera RIP
- Use ContourNesting

Added in ISO :

- Change Caldera RIP GUI Skin
- Use a custom Viewing Light Source
- Use PrintBleed
- Caldera EasyColor
- Caldera TotalColor
- Caldera ColorPad
- Caldera C1, C2, C3, C4

Note: Technotes will now be installed with drivers (inside driver calpatch).

New drivers

Printers

Most of those drivers were available in [Caldera RIP V10.2](#) as separate downloads.

- **Agfa**
 - Alpina 2000-RTR
- **AMPLA**
 - Elite-3204-R
- **Caddon**
 - ColorViewer
- **ColorJet-India**
 - Acura
 - GreenJet
 - Castrajet
 - Verve
- **d.gen**
 - Teleios Hexa
 - Papyrus G5
 - Arachne Hexa
 - Artrix G5
 - Teleios-Grande-H6
- **DGI**
 - FT-1604XR
 - FTII-3204D
 - HS-FTII
 - HS-FT-1902
 - VE-3204D
- **DPS**
 - DPS
- **Durst**
 - Alpha
 - Rho-Vetrocer
 - Rhotex-500
 - Tau-330i
- **Effetec**
 - EffeJet-FX
- **EFI**
 - FabriVu
- **Epson**
 - SureColor-S40600
 - SureColor-S60600
 - SureColor-S80600
 - SureColor-F7100
 - SureColor-F7200
 - SureColor-F6200
 - SureColor-P6000
 - SureColor-P7000
 - SureColor-P8000
 - SureColor-P9000
 - SureColor P10000
 - SureColor P20000
 - SureColor T3200/T5200/T7200
 - SureColor T5200D/T7200D

- **Flora Digital**
 - Xtra 3200UV
 - TX 3200DS
 - R3200-LEDS
 - Xtra-3000H
 - Xtra-5000R
- **Fujifilm**
 - Uvistar Hybrid 320
 - Acuity-EY
 - Acuity-Select-24
 - Acuity-Select-26-CMYKWW
 - Acuity-Select-26-CMYKWW
 - Acuity-Select-26-CCMMYK
 - Acuity-Select-26-CMYKcm
 - Acuity-Select-28-CCMMYKWW
 - Acuity-Select-28-CCMMYKWW
 - Acuity-Select-28-CMYKcmWW
 - Acuity-Select-28-CMYKcmWW
- **Gandy-Digital**
 - GD-Viper
 - SoftJet
 - Termin8tor
- **Homer**
 - Homer_K
 - Homer_RG5
- **HP**
 - DesignJet Z5600
 - DesignJet Z2600
 - Scitex 9000
 - Scitex 11000
 - Scitex 15500
 - Latex 1500
 - Latex 560
 - Latex 570
 - Latex 315
 - Latex 335
 - Latex 365
 - Latex 375
 - Latex 110
- **Inca**
 - Spyder X
- **Inktec**
 - Jetrix-LX5
- **ITI**
 - R3200 LED
 - TX2512 UV
 - TX3200 DS
- **JHF**
 - JHF Kyocera
- **Kip**
 - Kip 8x0
 - Kip 940
- **Luescher-Tschudi**
 - T-Rex 320
- **Matan**
 - Quantum-Flex
 - Quantum-LED

WHAT'S NEW?

- **Mautom Systemes**
 - Kham-Marathon-4C
 - Kham-NEON-4C
- **Mimaki**
 - UJV-55-4c
 - UJV-55-6c
 - TS-500P-4c
 - TS-500P-6c
 - TS-300P-4c
 - TS-300P-6c
 - UJF-7151 P
- **Misc**
 - GenericPRT3
- **MS Printing Solutions**
 - JP3-Dual
 - JP4-Dual
 - JP5evo-Dual
 - JP6-Dual
 - JP7-Dual
 - JPK-Dual
 - JPKevo-Dual
- **MTEX**
 - 5032-PRO
 - 5032-HS
- **Mutoh**
 - ValueJet-1324X
 - ValueJet-1624X
 - ValueJet-2638X
 - DrafStation RJ900X
- **NoeCha**
 - NoeCha1
- **Océ**
 - Arizona-1240
 - Arizona-1260-CMYKWW
 - Arizona-1260-CMYKWV
 - Arizona-1260-CCMMYK
 - Arizona-1260-CMYKcm
 - Arizona-1280-CCMMYKWW
 - Arizona-1280-CCMMYKWV
 - Arizona-1280-CMYKcmWW
 - Arizona-1280-CMYKcmWV
- **Pentum**
 - Icontek-A1024UV
- **Roland**
 - EJ-640
 - XT-640
 - VG-640/540
- **RTI**
 - Vortex 85X
- **Tecglass**
 - Vitro-Jet
- **Vanguard**
 - VK300D
 - VR5D

NEW DRIVERS

- **Vutek (EFI)**
 - GS3lx-Pro
 - HS125-Pro
 - HSr-Pro
 - LX3-Pro
- **Xerox**
 - Xerox-6705
- **Xorfex**
 - Xorfex-printer
- **Zimmer**
 - Colaris-Infiniti
 - Colaris3

Spectrophotometers

New Spectrophotometers

- Konica-Minolta FD7
- X-Rite ColorMunki

Note: Those drivers are available on Mac only.

Warning: EasyMedia does not drive ColorMunki for profiling monitors.

Dropped Spectrophotometers

- **X-Rite**
 - DTP 41
 - DTP 32
 - DTP 34
 - DTP 20

New Cutters

- Colex SharpCut
- XYZ DXF
- VHF
- Roland GS-24
- Kongsberg JDF
- MCT TigerVision
- Blackman & White TigerVision

**CALDERA - 1 rue des Frères Lumière - P.A. d'Eckbolsheim
BP 78002 - 67038 Strasbourg Cedex 2 - France**

www.caldera.com - Tel. +33 388 210 000 - Fax +33 388 756 242 - contact@caldera.com