

# What's New?

## Version 11.1

RIP SOFTWARE - VERSION 11 - CALDERA 2016



## Table of Content

<b>Table of Content</b>	2
<b>New Features</b>	3
<b>EasySelect</b>	3
CustomLoading	3
AutoLoading	4
AutoMedia	4
<b>Exponential Targets</b>	5
<b>Enhancements</b>	6
<b>PrintBleed V2</b>	6
<b>InkPerformer V2</b>	6
<b>G7 V2</b>	6
<b>Misc</b>	7
<b>Korean version</b>	7
<b>Nexio</b>	7
<b>Technote at Install</b>	7
<b>Documentation</b>	8
<b>Manuals</b>	8
New	8
Update	8
<b>HowTo</b>	8
Update	8
<b>Caldera Hardware Technotes</b>	8
New	8
Update	8
<b>Printer Driver Technotes</b>	9
New	9
Update	9
<b>New Drivers</b>	10
<b>And also</b>	11
<b>Dropped Connections</b>	11
<b>Discontinued Drivers</b>	11

### License Agreement

Copyright 2017 Caldera. All rights reserved.

All trademarks, logos and brand names mentioned in this publication are property of their respective owners.

All images and photographs here featured are the copyright of their respective owners.

Caldera reserves the right to modify software specifications and content cited in this document without prior notice.

## New Features

### EasySelect

**EasySelect** is the capability for **Caldera RIP** to use the size and type of loaded media in the printer. There is 3 levels of selection :

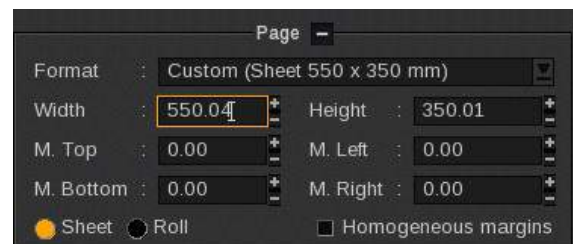
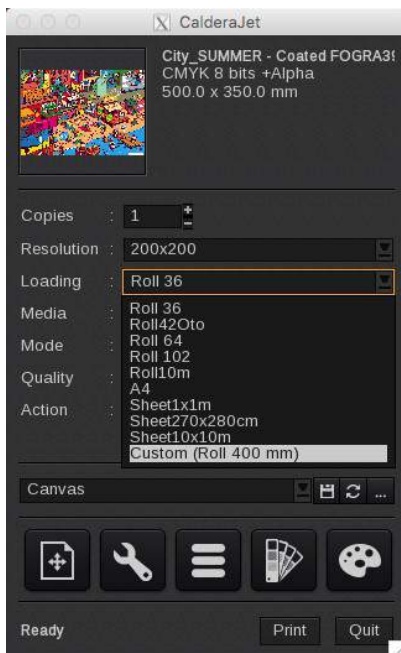
- **CustomLoading**: use a custom size (sheet or roll) defined at last moment in the print interface
- **AutoLoading**: use the size of the media actually loaded in the printer
- **AutoMedia**: use the type of the media actually loaded in the printer

Level depends of the manufacturer and the model.

This feature is **NOT** supported in **COPY** products.

### CustomLoading

**CustomLoading** is the capability of a driver to set a custom size in the print interface.



Majority of **Caldera** drivers support **CustomLoading**. List of printers **NOT** supporting **CustomLoading**:

- Encad
  - NovajetVinylJet, Novajet630, Novajet700, Novajet850, NovajetPro600e,
  - T200
- Epson
  - StylusPro 5000, 5500, 7000, 7500, 7600, 9000, 9600, 9500, 10600, 10000CF
- Generic
  - TIFF1BitDriver, TIFF8BitDriver
  - GenericPostscript
- HP
  - DesignJet 2000CP/2500CP/3000CP
  - DesignJet 5000/5500
  - DesignJet 1050C/1055CM
  - DesignJet 800
- Océ
  - 5050, 5055, 5070, 5075
- Xerox
  - 2260

## AutoLoading

**AutoLoading** is the capability of a driver to request the size of the media loaded in the printer.

List of supported manufacturers and models that support **AutoLoading**:

- Canon
  - Canon-IPF680/840
  - Canon-IPFPro2000/4000/4000S/6000S
- Epson
  - SureColor T3000/T5000/T7000, S30600/S50600/S70600, F6000/F7000, B6000/B7000
  - SureColor T3200/T5200/T5200D/T7200/T7200D, F6200/F7100/F7200/F9200, S40600/S60600/S80600,
  - SureColor P6000/P7000/P8000/P9000, P10000/P20000, P5000
  - GS6000
- Fujifilm
  - Vybrant F1600
  - Acuity-LED-3200R
- HP
  - L2x500, L26100, Latex 2x0
  - Latex 3x0, 3x5, 110
  - Latex 5x0
  - Scitex FB 500, 700, 550, 750
  - Designjet Z6200, Z6600, Z6800, Z5400, Z2600, Z5600
  - Designjet T7100, T7200
  - Designjet D5800
  - PageWide 4000/5000/8000
- Mimaki
  - JFX, TX500, SWJ320, JV150/300, CJV150/300, TS300P/500P, UJF7151P, UJV55
- MTEX
  - 5032 PRO/HS
  - Blue
- Roland
  - RE, RA, FH, XR, XF, VS-i (not VS !), RF, RT, LEF12i, LEF20, LEF200, LEF300, EJ, XT, VG, SG

## AutoMedia

**AutoMedia** is the capability of a driver to request the type of the media loaded in the printer.

List of supported manufacturer and models that supports **AutoMedia**:

- Canon
  - Canon-IPFPro2000/4000/4000S/6000S
- HP
  - L2x500, L26100, Latex 2x0
  - Latex 3x0, 3x5, 110
  - Latex 5x0
  - Scitex FB 500, 700, 550, 750
  - Designjet Z6200, Z6600, Z6800, Z5400, Z2600, Z5600
  - Designjet T7100, T7200
  - Designjet D5800
  - PageWide 4000/5000/8000

For multi-rolls printers, **AutoMedia** selects only the first active media or first loaded media.

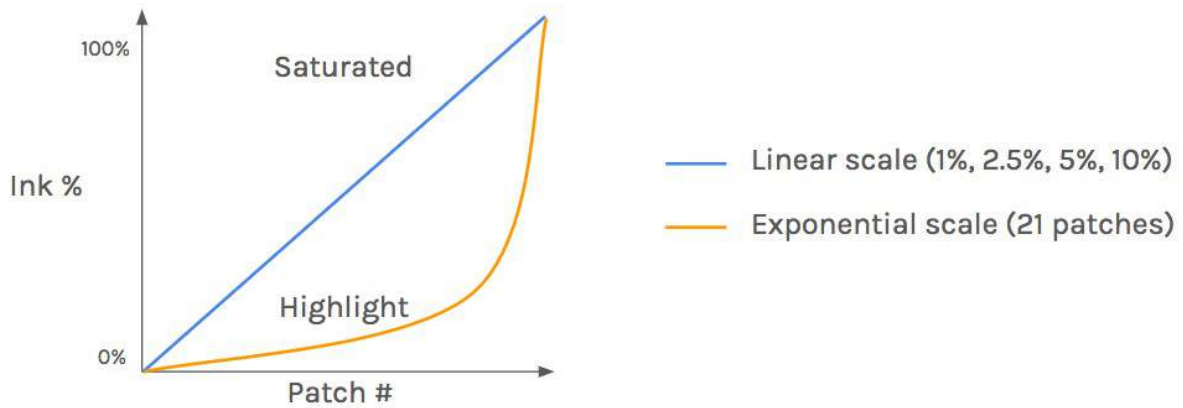
## Exponential Targets

Exponential targets in EasyMedia\* are new targets to improve accuracy for ink linearisation when ink limit needs to be very low to avoid bleeding or oversaturation.

\*EasyMedia is named ProfileExpert in the TextilePro interface.

Exponential target are available in CMYK and N-Color mode for:

- X-Rite i1Pro2
- X-Rite i1i02
- Caldera ColorPad
- Caldera EasyColor
- Caldera TotalColor
- HP embedded spectrophotometers
- Konica Minolta FD7
- Konica Minolta FD9



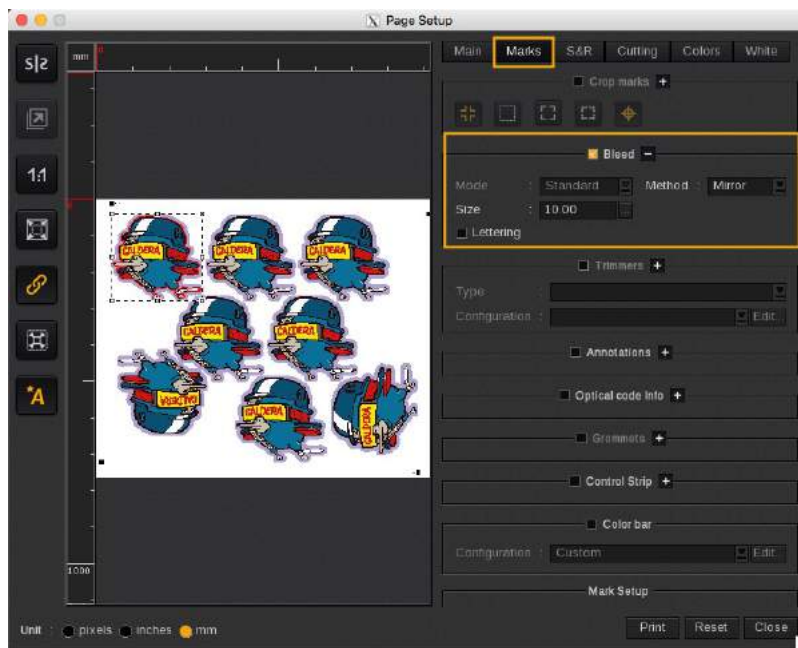
## Enhancements

### PrintBleed V2

New central interface in Marks tab to set bleeding including:

- Mode selection
  - Standard (exclude bleed in S&R margins, Standard and Contour S&R). This is bleed behavior from previous versions.
  - Canvas (include bleed in S&R margins, Standard S&R only). This mode supports independent top/bottom/left/right bleed sizes.
- Size
  - Bleed size (unique value in Standard mode, 4 independent sides in Canvas mode)
  - Lettering : ability to bleed internal cut contours when S&R Contour is enabled. This feature requires to have properly prepared contours. The object must be created as one form with holes. Creating separated paths as extern and intern cut contours will not work properly.

Standard bleeding and Canvas bleeding on images without contours are now previewed in the print client (using dummy color, realistic preview is not possible due to the resolution of the preview).



### InkPerformer V2

New version of the option that includes:

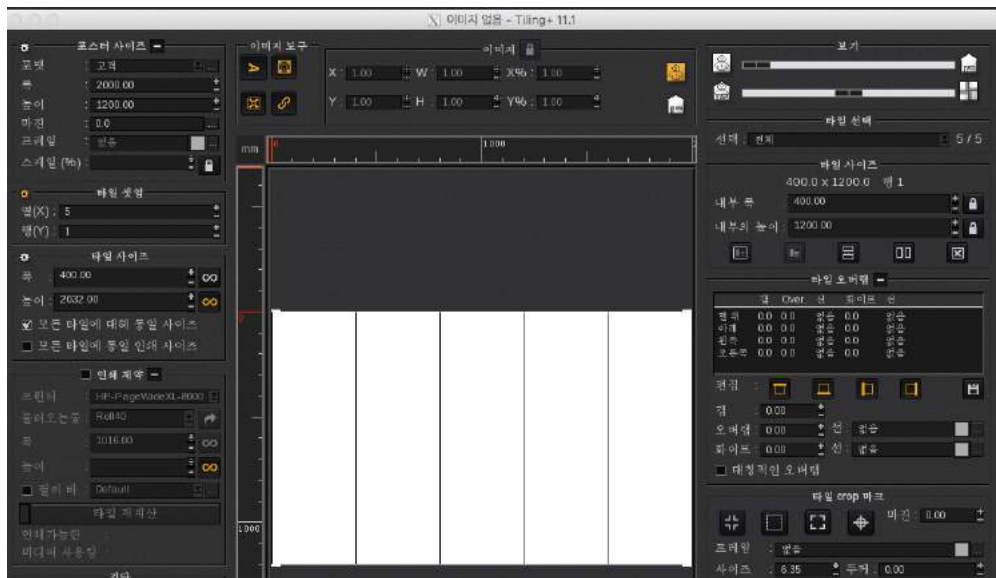
- Up to 10% more savings compared to last version
- Fixing color shift in some very special cases (can reduce the saving while improving color matching)

### G7 V2

New version of the G7 option that gives better linearisation corrections for a better G7 experience. P2P51 target is now included.

## Misc

### Korean version



### Nexio

- JMF
  - Implement ReturnJMF in SubmitQueueEntry command.  
→ get job feedback returned to a specified URL with ReturnQueueEntry JMF command
- JDF
  - Allow partial configuration in DigitalPrintingParams to overwrite Preset configuration
  - Optional print config in status when job is completed

### Technote at Install

Possibility to display directly driver Technote (if available) when installing a new driver.



## Documentation

### Manuals

---

#### New

- GranPlan (EN)

#### Update

- Caldera RIP (EN+FR)
- Installation (EN+ES+FR)
- Spooler (EN+FR)
- Step&Repeat (EN+FR)
- Trim-O-Matik (EN+FR)

### HowTo

---

#### Update

- Use InkPerformer (EN+ES+FR+RU)
- Use PrintBleed (EN+FR)
- Set the RGB workflow (EN+ES+FR)
- Use Step&Repeat Nesting (FR)

### Caldera Hardware Technotes

---

#### New

- ColorViewer (EN)

#### Update

- Caldera ColorPad (EN)
- Caldera TotalColor (EN)
- Caldera C1 (EN+ES+FR)
- Caldera C2 (EN+FR)
- Caldera C3 (EN+FR)
- Caldera C4 (EN+FR)



## Printer Driver Technotes

---

### New

- Agfa Tauro-H-2500 (EN+FR)
- Canon IPFPro2000 (EN+FR)
- Canon IPFPro4000 (EN+FR)
- Canon IPFPro4000S (EN+FR)
- Canon IPFPro6000S (EN+FR)
- Epson SureColor P5000 (EN+FR)
- Epson SureColor S40600-60600 (EN+FR)
- Fujifilm Acuity LED3200R (EN+FR)
- HP DesignJet Z6600-Z6800 (EN+FR)
- HP Latex 110-3xx5x0 (EN+FR)
- HP PageWide XL4000 (FR)
- HP PageWide XL5000 (FR)
- HP PageWide XL8000 (FR)
- Kip KIP8x0 (FR)
- Kip KIP940 (FR)
- Mimaki CJV150-CJV300 (EN+FR)
- Mimaki JV150-JV300 (EN+FR)
- Mimaki JFX500 (EN+FR)
- Mimaki UJF-3042FX (FR)
- Mimaki UJF-3042HG (FR)
- Mimaki UJF-6042 (FR)
- Mimaki UJV55 (EN+FR)
- Roland LEJ640 (FR)
- Roland RF640 (FR)
- Roland RT640 (FR)
- Roland SG (EN+FR)
- Roland VG (FR)

### Update

- Epson SureColor P10000 (EN+FR)
- Epson SureColor P20000 (EN+FR)
- Epson SureColor S30600 (EN+FR)
- Epson SureColor S50600 (EN+FR)
- Epson SureColor S70600 (EN+FR)
- HP PageWide XL4000 (EN)
- HP PageWide XL5000 (EN)
- HP PageWide XL8000 (EN)
- Kip KIP8x0 (EN)
- Kip KIP940 (EN)
- Mimaki UJF-3042FX (EN)
- Mimaki UJF-3042HG (EN)
- Mimaki UJF-6042 (EN)
- Roland EJ640 (EN+FR)
- Roland LEJ640 (EN)
- Roland RF640 (EN)
- Roland RE640 (EN)
- Roland VG (EN)
- Roland XT640 (EN+FR)

## New Drivers

- **Agfa:** JETi-Mira-LED-MG-2716-HS, JETi-Mira-LED-MG-2732-HS, Anapurna H2050i LED, Anapurna H2500 LED, Anapurna H3200i LED, JETi-Ceres-3200-RTR-LED & Tauro-H-2500
- **Canon:** IPFPro2000, IPFPro4000, IPFPro4000S & IPFPro6000S
- **CET Color:** K2
- **CnTop:** CnTop-RG5
- **DGI:** FT-1608, FT-1908, FT-3204X, VE-1904X
- **DigitechUSA:** Digitech-K3DF
- **Durst:** Rhotex-325 & Rho-163-TS
- **EFI:** Vutek-Xr
- **Epson:** SureColor F2000 & SureColor P5000
- **Flora:** Flora-Xtra320G, Flora-Xtra320K & Flora-HJ5000-SG
- **Fujifilm:** Acuity-Select-HS-34, Acuity-Select-HS-36-CMYKWW, Acuity-Select-HS-36-CMYKWV, Acuity-Select-HS-36-CCMMYK, Acuity-Select-HS-36-CMYKcm, Acuity-Select-HS-38-CCMMYKWW, Acuity-Select-HS-38-CCMMYKWV, Acuity-Select-HS-38-CMYKcmWW, Acuity-Select-HS-38-CMYKcmWV & Acuity LED 3200R
- **Hongrun:** Hongrun
- **JHF:** JHF\_KM\_Textile, JHF\_XJ3200 & KM\_1016
- **Longier:** Runner TX3200
- **Luescher-Tschudi:** Raptor-320
- **Mimaki:** SIJ320
- **MJet:** Bullet
- **MTEX:** MTEX-Blue & MTEX-Blue-8c
- **Mutoh:** ValueJet-628X, ValueJet-628X-CMYKWW, ValueJet-1628X-CMYKWMT & ValueJet-1628X-CMYKWW
- **Océ:** Arizona-2240, Arizona-2260-CMYKWW, Arizona-2260-CMYKWV, Arizona-2260-CCMMYK, Arizona-2260-CMYKcm, Arizona-2280-CCMMYKWW, Arizona-2280-CCMMYKWV, Arizona-2280-CMYKcmWW & Arizona-2280-CMYKcmWV
- **OKI:** ColorPainterE-54S & ColorPainterE-64S
- **PrinterEvolution:** D-Series-DS & T-Series-DS
- **Qres:** Qres-F-Series, Qres-HS-Series & Qres-Q-Series
- **Roland:** VersaUV LEF-300, SG300 & SG540
- **Royal:** GenericROYAL
- **Signracer:** Signracer & Signracer-HD
- **SkyJet:** SDM3300i
- **SPC:** Panthera & PantheraS
- **Sun3D:** Sun640-980, Sun645-985 & Sun900XL
- **WitColor:** US-10-25PL & US-10-25PL-M

## *And also*

### Dropped Connections

---

Firewire and SCSI connections have been dropped in V11.1. Firewire connection drop in Drivers for:

- Canon
  - W2200, W6200, W6400, W7200, W7250, W8200, W8400

### Discontinued Drivers

---

**Due to Firewire drop:**

- Mimaki
  - JV3

**Due to SCSI drop:**

- Xerox
  - X2, XPress
- Seiko
  - IP4500, IP6600

Share your Caldera experience and discover our online help on:  
[calderadesk.caldera.com](https://calderadesk.caldera.com)

CALDERA - 1 rue des Frères Lumière - P.A. d'Eckbolsheim  
BP 78002 - 67038 Strasbourg Cedex 2 - France

www.caldera.com - Tel. +33 388 210 000 - Fax +33 388 756 242 - contact@caldera.com