

A man with a beard and short hair, wearing a dark blue Henley shirt and light blue jeans, stands with his hands in his pockets. He is in a workshop or studio setting. Behind him is a large, industrial-grade UV flatbed printer. To the left, there is a workbench with a pink and white patterned material. A black pendant lamp hangs from the ceiling. The background wall is white with a black silhouette of a fish or shark.

Precision
printing without
boundaries

OCÉ ARIZONA SERIES
UV FLATBED PRINTERS

you can

Canon

Exceptional image quality on rigid and flexible media

Take your display graphics capabilities to the next level with the Océ Arizona Series. These UV curable and roll-to-roll inkjet printers allow you to produce flawless photo-quality prints on virtually any media imaginable. With a completely renewed range of models to choose from, the Océ Arizona Series offer fantastic opportunities to boost your display graphics revenue.

World-renowned

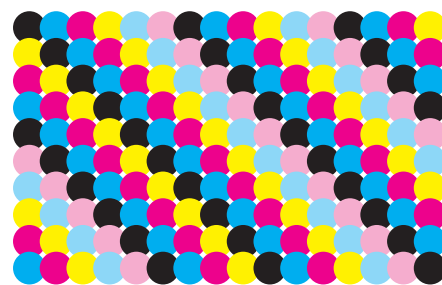
Ever since its inception, the Océ Arizona has been widely acclaimed.

The original Océ Arizona 250 GT was honoured with the DPI Vision Award, given to the digital imaging product development most likely to have a profound and positive effect on the industry. Since then, the Series has gone from strength to strength, collecting more than 30 industry awards for its exceptional image quality, versatility and productivity.

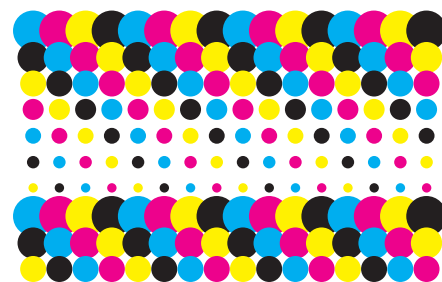
Océ VariaDot imaging technology

With their outstanding image quality, Océ Arizona Series printers give you the ability to offer premium printing services. The realistic, photo-like image quality is due to Océ VariaDot imaging technology. It uses variable-sized droplets and delivers finer details and smoother gradients in highlight areas, as well as crisp colours in the mid-tones and incredible density in shadows and solid colour areas. Images look far superior to those printed on a conventional, fixed-droplet, 6-color inkjet printer, while consuming up to 50 percent less ink.

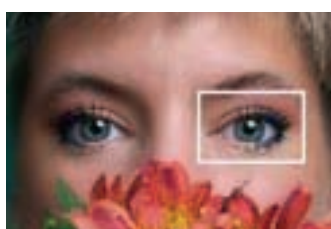




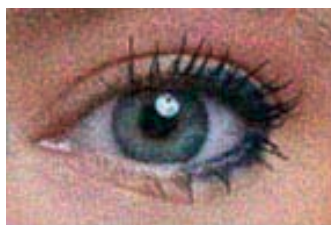
Fixed six-colour printing



Océ VariaDot imaging technology



Variable Dot Printing



Fixed Dot Printing

Less is more

Océ VariaDot imaging technology enables a printhead to produce droplets in different sizes instead of a typical single large droplet. It means images always appear less grainy than those printed on a six colour, fixed dot printer - regardless of the resolution. Varying the droplet size to as little as 6 picolitres also produces sharper images with smoother gradients and quartertones.

Conversely, the ability to create droplets up to 42 picolitres produces dense, solid colours. The net result is near-photographic image quality with sharpness usually expected at resolutions of 1,440 dpi or higher.

Every Océ Arizona printer can print perfectly registered, four-colour, six-point text all day long and models equipped with High Definition print mode can even produce perfect 2-point text.

In addition, the Océ Arizona 400 and 600 Series printers offer Active Pixel Placement Compensation. The flatbed table is mapped to determine system flatness and actively adjusts pixel placement to guarantee uniform, extra-sharp printing over the entire flatbed table.

On the Roll-Media-Option (RMO) the mapping is done dynamically, during printing. This is to compensate for heating up of the platen by the UV lamps and to guarantee optimum print quality on the RMO.

Reduce ink costs by up to 50 percent

Because Océ VariaDot imaging technology uses only four colours and can jet exactly the right size droplet, it uses up to 50 percent less ink than fixed-droplet, six colour printers. For every square metre of printing this equates to less than 8ml of ink – cost savings that really count in today's climate.

Produce stunning point-of-sales materials, banners, exhibit graphics, displays and more.

Precision printing without compromise

An array of powerful features and innovative technology ensures that the Océ Arizona Series is the ideal printer for a huge diversity of rigid and flexible media applications.

Océ VariaDot imaging technology

- True greyscale: 6-42 picolitre droplets for every possible image element
- Exceptional print quality comparable to photographic imagery
- Finer details, smoother gradients plus dense and uniform, solid colours
- Active pixel placement compensation to guarantee uniform, extra-sharp printing

Roll media option

- Available as a factory order or field-upgrade on all models
- Supports flexible roll media up to 2.2m wide
- Proven reliability for unattended operation

Independent rigid and roll systems

- Print on roll media while preparing your next rigid media job – no need to stop to change modes
- Compact roll media handling reduces overall footprint and reduces roll media waste



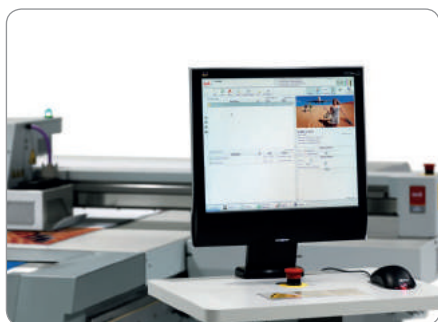
Six or eight independent ink channels

- Two or four additional channels (model dependent) for six or eight independent ink channels
- Print varnish applications with spot and flood gloss effects
- Use white ink to print on coloured media, create Backlit, Day-Night and Opaque applications
- Utilise CM² printing for beautiful high-speed production printing

Award-winning image quality suitable for POP/POS production, backlit images, exhibition graphics, industrial applications and more.

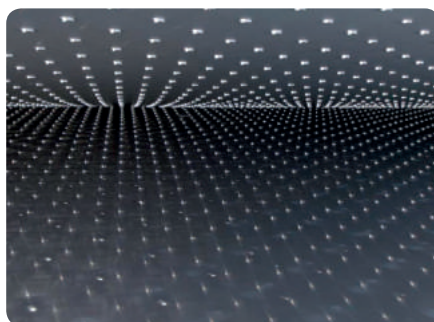
Safety features

- Shuttered lamp area protects the operator and print heads from excessive UV exposure
- Carriage guard protects the printer from media collisions by stopping motion if interrupted



Easy operation

- No special electrical or compressed air requirements
- Single-phase electrical power
- Reprint a job with just one click
- Batch mode for the efficient production of complex multilayer jobs



True flatbed

- Support for rigid media or objects up to 50.8 mm (2") thick, model dependent
- Edge-to-edge (full bleed) printing
- Easy, precise double-sided printing
- The new 6 or 7 zone vacuum system holds the media in place and eliminates time-consuming table masking for standard sized jobs



Bulk ink system

- Inks in quick-release bags
- Easy replacement on-the-fly
- Temperature-regulated system maintains consistent ink viscosity
- Low-ink warning system

Endless production possibilities

The Océ Arizona Series opens the door to a world of specialised applications that can command premium prices. Unlike conventional rigid capable printers that use friction or belt feed systems, the Océ Arizona Series can print on just about anything. That means irregular shaped or non-square items, heavy substrates and materials that have an uneven surface, such as wood. They are also perfect for complex technical or industrial printing applications where accurate, repeatable print geometry is critical.

Perfect registration

A vacuum system holds rigid media stationary on the printer's flat table surface, ensuring perfect registration even on multiple imaging passes or double-sided printing applications. Print edge-to-edge (full bleed) to save time and labour costs in finishing. A time-saving batch mode is provided in certain models for the efficient production of complex, multilayer jobs.



The latest Océ Arizona Series printers enable exciting new applications using flood and spot varnish and white printing to unleash your customers' creativity.

Flexible media printing

With the Roll Media Option you can print on a wide range of flexible media without compromising the rigid printing workflow in any way. These include banners, textiles, films, self-adhesive vinyl and various indoor and outdoor papers. And unlike most systems, the two printing areas do not interfere with each other: while printing on the Roll Media Option, the operator can set up the next rigid media job on the flatbed without disrupting the printing process. No operator intervention is required to switch between rigid and flexible printing modes. That means no downtime and no delays in your production schedule.

Six or eight independent channels

The Océ Arizona 400 and Océ Arizona 600 Series, introduce new levels of versatility. Six or eight independent ink channels allow varnish applications for spot and flood gloss effects, as well as white and even double-opacity white ink if varnish is not required. White Ink enables printing on non-white media or objects (under-printing), creating backlit applications on transparent media (over-printing) and using white as a spot colour. It allows you to simultaneously print white between layers of colour for a Day-Night image that can be backlit or not, depending on the time of day.

Six or eight ink channels also means that new levels of productivity can be reached. CM² (double Cyan and Magenta) nozzle density is now possible, heightening the printer's productivity. The multiple user-selectable vacuum zones supporting standard media sizes without table masking, also significantly increases system productivity.

Extra productivity

The extra width of the Océ Arizona XT models enable them to be used in a continuous imaging mode for rigid media up to 1.25m by 2.5m, or a standard 4 by 8-foot board. Two rigid boards of this size can be mounted on separate vacuum areas of the flatbed table. While one board is being printed, the operator can change the other. Since the printer never has to stop printing for a media change, users can significantly increase their net print production.



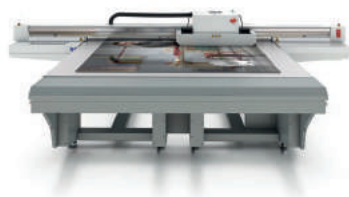
The Océ Arizona Series printers



	Océ Arizona 6x0 XT	Océ Arizona 6x0 GT
Applications	Point of purchase displays, Posters, signage & banners, Transit advertising, Backlit displays, Industrial applications, Oversized projects, Continuous production of 1.25m x 2.5m (4' x 8') rigid boards	Point of purchase displays Posters, signage & banners Transit advertising Backlit displays Industrial applications
Rigid media size	2.50m x 3.05m	1.25m x 2.50m
Rigid media thickness	50.8mm	50.8mm
Océ VariaDot printing technology	6 to 42 picolitre droplets, 636 nozzles per head, two printheads/color, dual row design	6 to 42 picolitre droplets, 636 nozzles per head, two printheads/color, dual row design
Express print speed	64.7m ² /hr	60m ² /hr
Production print speed	49.7 m ² /hr (*)	46.3m ² /hr (*)
Quality print speed	33.3m ² /hr	31.3m ² /hr
Fine Art print speed	22.4m ² /hr	21.1m ² /hr
High Definition print speed	Not available	Not available
UV curing technology	171mm, high output/low heat UV arc lamp with integrated shutter/reflector	171mm, high output/low heat UV arc lamp with integrated shutter/reflector
Printer configurations	Océ Arizona 640 XT - 4 ink lines Océ Arizona 660 XT - 6 ink lines	Océ Arizona 640 GT - 4 ink lines Océ Arizona 660 GT - 6 ink lines
Ink configurations	Arizona 640 XT CMYK	Arizona 640 GT CMYK
	Arizona 660 XT CMYK & CM ² , or CMYK & White, Varnish, or CMYK & Double White	Arizona 660 GT CMYK & CM ² , or CMYK & White, Varnish, or CMYK & Double White
Upgradeability of ink configurations	2-Ink channel upgrade available for Arizona 640 XT, field-upgrade	2-Ink channel upgrade available for Arizona 640 GT, field-upgrade
Durability of output	2+ years	2+ years
Roll Media	Available option, up to 2.2m, factory-order or field-upgrade	Available option, up to 2.2m, factory-order or field-upgrade

(*) = using CM² printing

With a diverse range encompassing standard and extra large table models, there's a printer to meet all your customers' requirements.



Océ Arizona 4x0 XT	Océ Arizona 4x0 GT	Océ Arizona 318 GL
Point of purchase displays Posters, signage & banners Transit advertising Backlit displays Industrial applications Oversized projects Continuous production of 1.25m x 2.5m (4' x 8') rigid boards	Point of purchase displays, Posters, signage & banners, Transit advertising Backlit displays Industrial applications	Point of purchase displays, Posters, signage & banners, Transit advertising Backlit displays
2.50m x 3.05m	1.25m x 2.50m	1.25m x 2.50m
50.8mm	50.8mm	48mm
6 to 42 picolitre droplets, 636 nozzles per head, one printhead/color, single row design	6 to 42 picolitre droplets, 636 nozzles per head, one printhead/color, single row design	6 to 42 picolitre droplets, 318 nozzles per head, one printhead/color, single row design
34.2m ² /hr	32.8m ² /hr	18m ² /hr
25.3m ² /hr (*)	24.5m ² /hr (*)	12.2m ² /hr
14.4m ² /hr	14m ² /hr	8.4m ² /hr
11.7m ² /hr	11.3m ² /hr	6.3m ² /hr
6.1m ² /hr	5.9m ² /hr	Not available
110 mm, high output/low heat UV arc lamp with integrated shutter/reflector	110 mm, high output/low heat UV arc lamp with integrated shutter/reflector	110 mm, high output/low heat UV arc lamp with integrated shutter/reflector
Océ Arizona 440 XT - 4 ink lines Océ Arizona 460 XT - 6 ink lines Océ Arizona 480 XT - 8 ink lines	Océ Arizona 440 GT - 4 ink lines Océ Arizona 460 GT - 6 ink lines Océ Arizona 480 GT - 8 ink lines	Océ Arizona 318 GL - 4 or 5 ink lines
Arizona 440 XT CMYK	Arizona 440 GT CMYK	CMYK or CMYK & White (White is an option)
Arizona 460 XT CMYK & White, Varnish, or CMYK & Double White	Arizona 460 GT CMYK & White, Varnish, or CMYK & Double White	
Arizona 480 XT CMYK & CM ² & White Varnish, or CMYK & CM ² & Double White	Arizona 480 GT CMYK & CM ² & White Varnish, or CMYK & CM ² & Double White	
2- or 4-Ink channel upgrade available for Arizona 460 XT and 440 XT, field-upgrade	2- or 4-Ink channel upgrade available for Arizona 460 GT and 440 GT, field-upgrade	White ink option available as factory-order only
2+ years	2+ years	2+ years
Available option, up to 2.2m, factory-order or field-upgrade	Available option, up to 2.2m, factory-order or field-upgrade	Available option, up to 2.2m, factory-order or field-upgrade

Our mission is to help you reach your business goals for years to come and we have the expertise to back it up.





We will help you to grow your display graphics business securely and profitably. We offer a total solution for the display graphics market including printing and finishing hardware, software, consumables, service and financing.

Experience a long-term partnership

Rest assured with Canon Service & Support

Prior to any investment that you make, we make sure we can fully support it. Our specialist technicians are professionally trained to work with every product in our range so we can deliver the best possible service. Spare parts are stocked in more than 30 countries worldwide with major warehouses in Europe, North America and Asia. As a result, vital components are always on hand to keep your machines running. What's more, we employ a worldwide team of Applications Specialists – printing experts with intensive training and years of experience – to assist you before and after your equipment is installed. They are at your service for training and applications support, so you can invest your energy in exploring new business opportunities.

Creating global leadership in printing

Canon and Océ have joined forces to create the global leader in the printing industry. Our customers can choose from one of the industry's broadest range of products backed by best-in-class service and support organisations. Look to the new Canon-Océ combination for:

- Enterprise printing in the office and corporate printroom
- Large format printing of technical documentation, signage and display graphics
- Production printing for marketing service bureaus and graphic arts
- Business Services for document process outsourcing





Canon Inc.
canon.com

Canon Europe
canon-europe.com

08/13/v1
UK English edition
© Canon Europa N.V., 2013

Canon (UK) Ltd
Woodhatch

Reigate
Surrey
RH2 8BF
Telephone no 01737 220000
Facsimile 01737 220022
canon.co.uk

Canon Ireland
3006 Lake Drive
Citywest, Saggart
Co. Dublin, Ireland
Telephone No: 01 2052400
Facsimile No: 01 2052525
canon.ie